

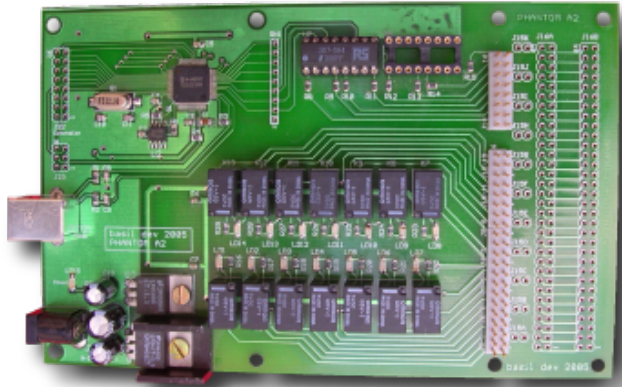
UR111 Interface

USB, Isolated, Digital I/O Interface

14 relay outputs / 8 optocoupler inputs

- Small and portable isolated digital I/O interface
- 14 dry contact outputs driven by DIP relays
- 8 optocoupler inputs
- USB 2.0 full speed host interface (12 Mb/s)
- Configurable interconnection area for easy interfacing to target application
- Euro PCB (100x160mm) with mounting holes

The UR111 interface device is a generic interface that controls and monitors digital I/O signals on a target application hardware. This board is typically designed to replace mechanical switches and to monitor digital signals within an automated testing system. All I/O's are isolated, thus preventing from creating common mode noises when interfacing to the system under test.



POWER SUPPLY

The UR111 interface board is powered by an external 9-14VDC power supply. Due to the presence of electromechanical relays, the peak current consumption may reach 500mA.

RELAY OUTPUTS

All 14 outputs are implemented with relay contacts. Each relay provides 1 inverter capable of switching up to 1A at 24VDC. Please refer to OMRON G5V-1 data sheet for more information about switching capabilities.

STATIC OPTOCOUPLER INPUTS

8 optocoupled inputs are available for general-purpose signal monitoring. Each input drives an optocoupler LED via a 470 ohms resistor. The I/O management software allows to efficiently manage input events with post-processing capability.

CONTROL SOFTWARE

The control software drives the UR111 interface by executing simple commands in plain text format. All input events and output feedbacks are reported as plain text messages

with a 10ms accurate time stamp. The control software is natively designed for the TestFarm automated testing system, and is delivered with a TestFarm compatible PERL library.

TARGET CONNECTION AREA

The target connection area allows to directly solder connectors that are pin-compatible with the target system under test. A interconnection pad allows to configure connectors pinout using a small adaptation daughter-board. Alternatively, it is also possible to configure target connectors pinout by simply using wrapped wires, thus simplifying the hardware integration task of the testing system.

OPERATING SYSTEM

The UR111 I/O interface is ready to run under Linux 2.6 or higher. No device driver is required. The control program is available in a RPM software package for Fedora Core Linux distributions.

Ordering Information

UR111-A2 USB Interface

Includes TestFarm compatible management software

Basil Dev SAS
24 rue de la Gouttière
91310 Linas
FRANCE

www.basildev.com